

## About Us

**Leotech** (Industrial Supply Division) is a well diversified and professionally managed organization that aims to provide the procurement solutions to Power, Oil & Gas, Water Desalination, Infrastructure, Food & Beverage, Marine and Construction industries. The group of dedicated Engineers and professionals coupled with superior performance of industrial service empower Leotech to meet the industry standards and requirements of the clients.

### INTERNATIONAL SALES & EXPORT COUNTRIES

In house facility for export worthy packing and shipping document service to meet the requirements of the end user. We provide bulk piping and valve package to OMAN-QATAR-SAUDI ARABIA-KUWAIT-INDIA & AFRICAN countries.

### FABRICATION DIVISION

Our Engineering team is specialized to provide the mechanical solutions for machining and custom made fabrication of steel works.

### Group Associates and Partners

Rove Electricals - ARB Technical Service

## Our Products



### STAINLESS STEEL PIPE SEAMLESS AND WELDED

Size 15mm-300mm (1/2"-12")

Material ASTM A 312 TP 304/316L

### STAINLESS STEEL BUTTWELD FITTINGS

Size 15mm-300mm (1/2"-12")

Material ASTM A403 TP304/316L

### STAINLESS AND ALLOY STEEL FORGED FITTINGS

Size 6mm-100mm (1/8"-4")

Material ASTM A182 F304/316L/F5/F11/F22

### STAINLESS STEEL FORGED FLANGES

Size-15mm-600mm (1/2"-24")

Material ASTM A182 F304/316L Class ANSI /BS/EN/DIN

**GELDBACH - BEBITZ - NEUMIRA - VIRAJ - METALFAR**

**KOBE - FROCH - TACHEN - BKL - DYNAMIC FORGE**



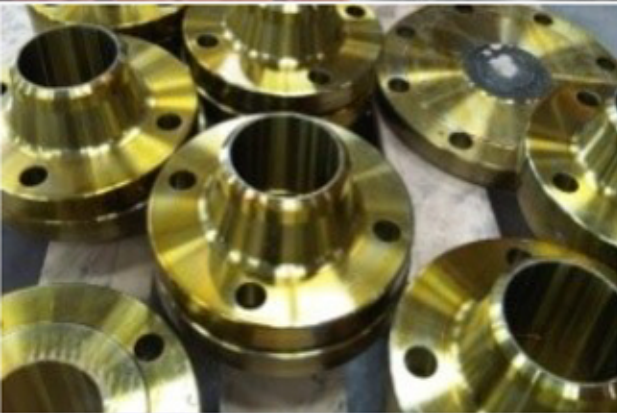




## CARBON STEEL PIPES-FITTINGS-FLANGES

6mm-600mm (1/8"-24") Material ASME/API/BS/EN/ASTM

**Pipes** - Seamless & Welded API5L/X42-/X70/A106/A335/P11/P22  
**INTERPIPE-MITTAL/NIPPON-SUMITOMO-UTKARSH**



**Fittings** - Buttweld/Socket Weld/Threaded  
**GELDBACH-BKL-TK-SBC-BIS-LAME-MEGA**

**Flanges** - SORF/W/N/BLIND/RTJ - ANSI & PN/DIN standards  
**GELDBACH-ULMA-GALPERTI-METALFAR**

**Ductile Iron Grooved & Malleable Iron Fittings** UL Listed  
**NATIONAL- WINGROU-BIS**



## VALVES - Gate/Globe/Check/Ball/ Butterfly

Material- Steel/Stainless Steel /Copper Alloy API600/API6D/API6A/BS5351

**AUDCO - FLOEC - PSV - BFE -CRANE - MECH**

## Cast steel Valves

Material - ASTM A216 WCB/316/CF8M

## Forged Steel Valves

Material - ASTM A105/A182-F316/A350 LF2

## Cast Iron & Ductile Iron Valves

Material - ASTM A 536 / BS 5150 standard (UL listed)

## Non Ferrous & Alloy Valves -Ball/Gate/Check/Globe

Titanium,Brass , Bronze/DZR Threaded valves



## FASTENERS-GASKETS-FABRICATED PRODUCTS

Stud bolts , Hex bolt , Anchor bolt ASTM A193 B7/SS304/316

Foundation bolt ASTM A193 B7/SS304/316

Spiral wound, CNAF, PTFE,Viton

Puddle Flanges, Pipe supports

Fabricated Spools, Handrails, Ladders,Skids

## ELECTRICAL PRODUCTS

Isolators,Switch Gear Panels,Cables and accessories



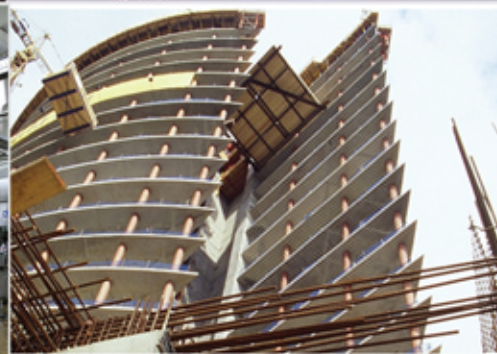
## GENERAL PRODUCTS

SS Plates,Angles,RoundBar, Wire Mesh,

Pressure Gauge, Thermometers, Expansion Joints

Diesel Flow meter, Hose Fittings, GI Fittings





**LEOTECH** LLC  
PO Box No.231687, Dubai  
United Arab Emirates  
Fax No +9714 256 8753  
Tel. No +9714 256 8899  
Mob. No +97150 702 9966

[sales@leotechme.com](mailto:sales@leotechme.com) | [lgtdubai@eim.ae](mailto:lgtdubai@eim.ae)  
[www.leotechme.com](http://www.leotechme.com)